

# PPRC - BASELINE KERBSIDE AUDIT

Kerbside audits provide insight into the waste and recycling behaviour of the community. In March 2024 Council will transition to weekly food organics and garden organics (FOGO) collections and fortnightly waste. The audit results provide evidence to support this change.

KESAB Environmental Solutions delivered the audit in August 2023. Cleanaway collected the audit sample of general waste bins and garden organics bins from 100 households. Bins were collected on the regular collection day and an audit supervisor made sure the appropriate sampling method was followed. Collected materials were sorted and weighed based on material type.

## General waste bin composition

The introduction of weekly FOGO recycling will mean nearly two thirds of the general waste bin can be recovered and recycled if materials are sorted correctly (Figure 1).

- 36% of material is food waste and can be recycled in the new FOGO service. Some of this material is packaged organics that will need to be separated before it is placed in the FOGO bin.
- 8% is garden waste that should be recycled through the existing organics recycling bin (this may be placed in the general waste bin because the organics bin is full).
- 17% of materials can be recycled through the yellow lid comingled recycling bin.

These results are consistent with other councils and provide strong evidence to support the transition to weekly FOGO. They can also be a powerful tool in the communications to residents. Correctly separating and recycling materials will help residents to manage the fortnightly collection of the general waste bin.

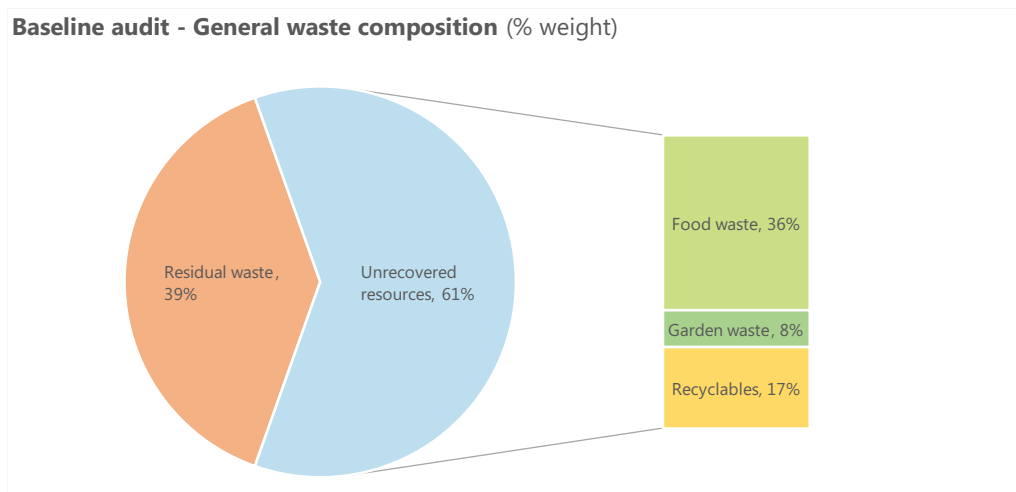


Figure 1: General waste bin composition, % weight

## Organics recycling bin composition

The composition of the organics recycling is typical for a garden waste only bin. The majority is garden waste, and a small proportion of food and contamination (Figure 2).

The contamination level is low at 0.9%. KESAB did note that the Cleanaway drivers thought the loads were less contaminated than usual. However, this cannot be independently verified and contamination in the organics can often be very visible but may not be significant based on weight (e.g. plastics).

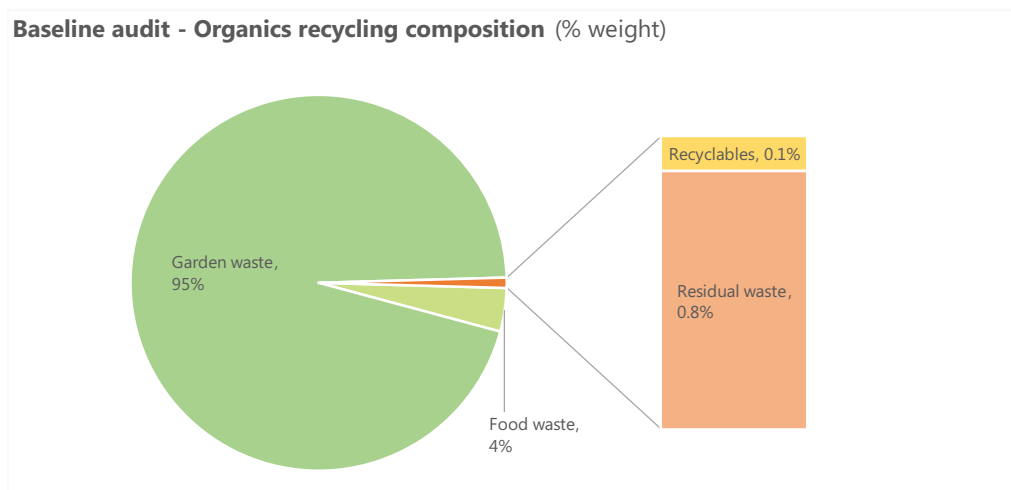


Figure 2: Organics recycling bin composition, % weight

### Considerations for the weekly FOGO transition

- The audit results provide strong evidence to support Council’s communications.
  - Weekly FOGO and fortnightly general waste collections are being introduced to recycle food waste which is over one third of the general waste bin.
  - The extra bin capacity will also support residents to recycle the garden waste that is in the general waste bin.
- A focus on keeping contamination low will be important, especially the separation of food and packaging.

### Summary of composition data

|  | General waste (kg) | Proportion % | Organics recycling (kg) | Proportion % |
|--|--------------------|--------------|-------------------------|--------------|
| Loose food                                 | 184.2              | 17.3%        | 70.3                    | 3.3%         |
| Food in comp. bags                         | 13.7               | 1.3%         | 9.0                     | 0.4%         |
| Packaged food                              | 189.5              | 17.8%        | 0.6                     | 0.0%         |
| Garden waste                               | 32.6               | 3.1%         | 2,021.8                 | 95.3%        |
| Other organics                             | 48.2               | 4.5%         | 2.3                     | 0.1%         |
| Non-compostable garden waste               | 37.6               | 3.5%         | 0.2                     | 0.0%         |
| Recyclables                                | 179.7              | 16.9%        | 2.2                     | 0.1%         |
| Residual waste                             | 379.4              | 35.6%        | 15.7                    | 0.7%         |
| <b>Total</b>                               | <b>1,065.0</b>     |              | <b>2,122.2</b>          |              |
| <b>Unrecovered Resources/Contamination</b> | <b>647.91</b>      | <b>61%</b>   | <b>18.73</b>            | <b>0.9%</b>  |
| <b>Unrecovered FOGO</b>                    | 468.2              | 44%          |                         |              |
| <b>Unrecovered Recyclables</b>             | 179.7              | 17%          |                         |              |